



Perfect Cooling



OUR MISSION



“ *Our mission is to excel in the manufacture, Supply and Installation of the best quality, safest and aesthetically.*

Creating customized Cold Room, Clean Room, Blast Chiller & Freezer Room, Banana Ripening Chamber, Incubation Chamber, Clean room Door, Cold Room Door, Sliding Door, Hatch Door, Electrical Control Panel & Tube Ice Machine and Supplying Evaporator Unit for Cold & Freezer Room, Condensing Unit for Cold & Freezer Room, Water Chiller, PUF Panel, Roof Panel & Floor Slab.

Perfect Cooling System

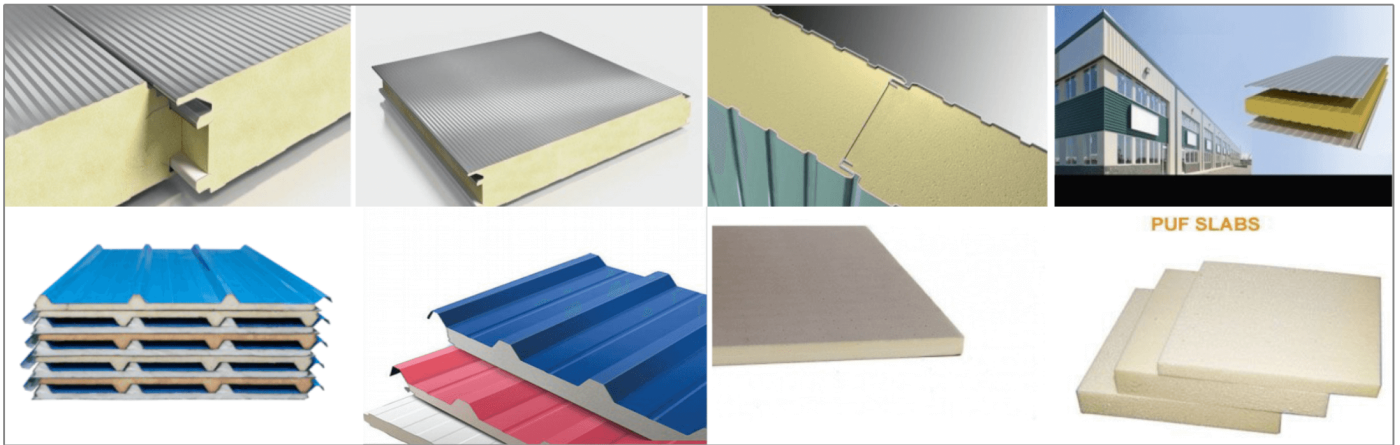
Company Profile

Regarded as forerunners of the domain we Perfect Cooling System are efficiently carrying the responsibility of meeting the major share of market demand of Commercial Freezers and Other Cooling Solutions by functioning with utmost dedication as Service Providers, Suppliers and Traders of a complete gamut of Products.

We have lucratively carved a niche for ourselves in the domain by offering products like Cold Room Unit, Blast Freezer, bulk Cooler, Clean Room, Tube Ice Machine and Flake Ice Machine, etc. Also, our ability to render customer oriented services like maintenance, sales support, etc have acted as major catalyst in our radical growth. Each and every element of our product line is tried and tested to be at par with international variants in terms of quality, price and functionality.

Additionally, we have occupied a wide facility in Mumbai, Maharashtra, India for effective management of our large inventory turnover ratio which is a function of our national wide fame. This facility renders immense support for attuning our supply with market demand as it abides us in easy storage and extraction of sourced range. We always ensure to far exceed our patrons expectations by offering them with unmatched value.

PUF Panel, Roof Panel, & PUF Slab



Pre-fabricated, insulated, metal laminated panels best suited for freezing and chilling

- Rigid polyurethane Foam (RPUF) insulation
- Pre-painted Galvanized Steel (PPGS) or Stainless Steel (SS) metal laminate
- Insulation thickness from 30 mm up to 200mm
- Panel width of 1000 mm
- Joinery through cam lock and finished with a siliconesealant

Clean Room



- INSULATED PANELS FOR CLEAN ROOM
- BUILDING-INSTABUILD HYPER CLEAN (EBP)
- RIGID POLY URETHANE /POLY ISOCYNURATE FOAM INSULATED
- PANELS SUITABLE FOR BUILDING CONSTRUCTION APPLICATION,
- WITH THICKNESS 50-150mm. STANDARD LAMINATION - PCGI. WITH EDGE PROFILE

Clean rooms are designed to maintain extremely low levels of particulates, such as dust, airborne organisms, or vaporized particles.

Doors

(Clean Room Door, Cold Room Door, Sliding Door & Hatch Door)



Pre-fabricated, insulated doors with great features

- Swing, sliding, roll-up types
- Non-corrosive, non-metallic hinges, door handles, and locks
- Self-closing hinges
- Heaters in door leaf and frame
- Audio alarm for 'door-open' condition
- View port with anti-condensate glass
- Lock defeat mechanism
- Positive seal mechanism for all door types to avoid cold air loss

Specially-cold rooms, Cold Storage for special applications

- High humidity cold rooms, Cold Storage for fruit and vegetable storage
- Low humidity cold rooms, Cold Storage for seed and hygroscopic material storage
- Humidification and automation systems
- Unique design for generating low humidity environment using specially designed

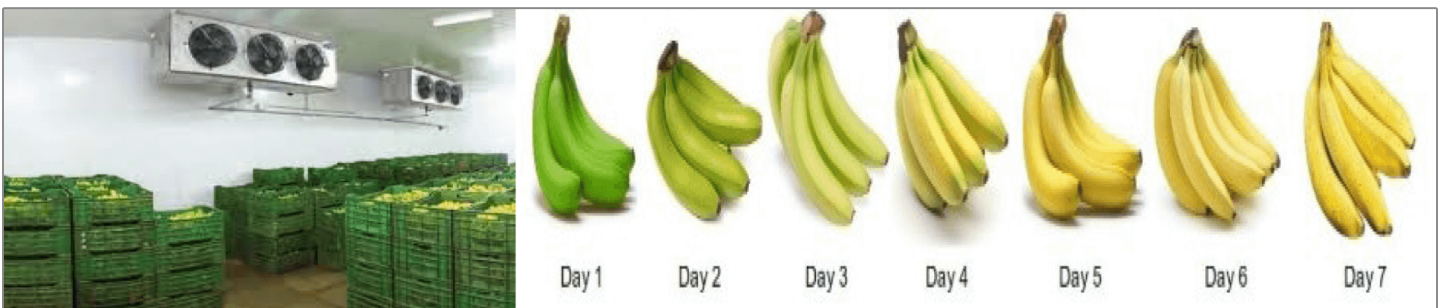
Refrigeration systems

Cold Storage Room / Cold Room



We are a renowned supplier of an excellent range of Cold Room. This also includes Room Air Conditioners, Cold Storage Room and Modular Cold Room. Widely used in food & beverage, pharmaceutical and cosmetic industry, these are specifically engineered to preserve the products at a specific temperature. We offer our entire range to clients in varied specifications to meet their exact needs. A cool store is a large refrigerated room or building designed for storage of goods in an environment below the outdoor temperature. Products needing refrigeration include fruit, vegetables, seafood and meat.

Banana Ripening Chambers



Engineered to simulate nature's ripening process without altering the taste or Freshness. PCS Pioneered the indigenous, pressurized type Banana Ripening chambers of global standard which is running exceptionally well all over India. With expertise across the full spectrum of fruit Banana ripening chambers, Pre-cooling chambers, cold storage construction & refrigeration system, PCS provides focused solutions namely conceptualizing, designing, manufacturing and implementation of cold infrastructure requirements to cater to need of diverse industries. PCS offers Banana ripening chambers available with Pressurized/Reverse air flow evaporators and Humidity controlled rooms.

Incubation Chambers

Standard Incubation time is approx. 4 hours but it will depend upon the packing type and loading temperature of curd with a condition that the chamber temperature should be 45° C before loading. Standard cooling time is approx. 5 hours but it will depend upon the packing type and loading temperature of curd with a condition that timing will be considered after getting chamber temperature as 2° C.

Blast Chiller & Freezer Room

Application: Multi-Door Design is effective when freezing or hardening of product is done with storage in crates and trolley.

Product: Ice Cream, Meat, Ready to Cook & Ready to Eat Food.

Temperature: -25°C to -40°C

Capacity: 200 Kg to 2000 Kg

Refrigeration Systems

- Air/water Cooled Hermetic/semi-hermetic / screw/ scroll R404a Refrigerant Systems For Cold Storages
- Low Humidity Refrigeration Systems for Seed Storages
- High Humidity Refrigeration Systems
- Ultra Low Temperature Refrigeration Systems For Blast/tunnel/plate/spiral Freezers
- Bulk Milk Chillers
- Water/brine Chillers For Milk Chilling And Other Processes
- Special Refrigeration Systems For Stability Chambers
- Special Refrigeration Systems For Ripening Chambers
- CA Chamber



Ammonia Based Refrigeration Systems

- Refrigeration Systems For Cold Storages
- Ultra Low Temperature Refrigeration For Blast/ tunnel /plate freezers
- Iqf For peas /fish/rte Etc..
- Spiral Freezers For Meat/rte/f&v Etc..
- Water/brine Chillers For Milk Chilling And Other Processes
- Compressor Packages With Open/ recip/screw Compressors Suitable For Any Applications - Compak
- Water Cooled/evaporative condensing unit for all the capacities - conspak
- Low pressure receiver with controls – freezolor



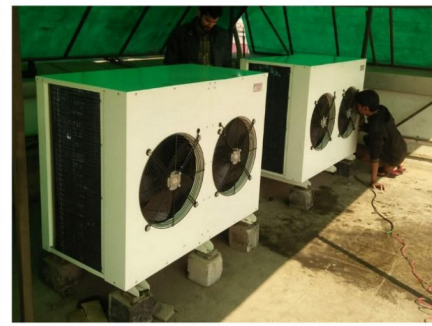
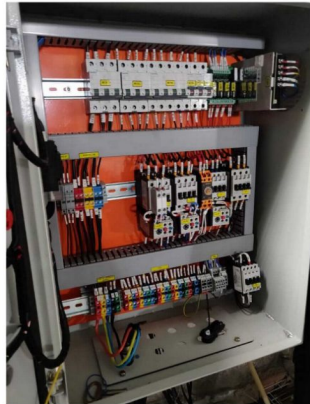
PERFECT COOLING SYSTEMS

REFRIGERATION TECHNICAL DATA

Sr.No	Model	Cold Room Volume		Suggested Cooling capacity					Connected Load Kw	Power Supply	Condensor		Refrigerant		Compressor Type		
		CFT	CMT	Watts	HP	Cal	BTU	TR			Air Cooled	Water Cooled	R-404	R-22	Reci procating	Scroll	Semi Sealed
FOR HIGH TEMPERATURE @ 2degC TO 8degC																	
1	PCSH-8	300	8	2198	2.95	1890	7500	0.62	1.8	1 PH	Yes	No	No	Yes	Yes	No	No
2	PCSH-12	500	14	3443	4.62	2961	11748	0.98	2.6/1.93	1/3PH	Yes	Optional	Yes	Yes	Yes	No	Yes
3	PCSH-17	650	18	4899	6.57	4213	16715	1.39	3.1/2.63	1/3PH	Yes	Optional	Yes	Yes	Yes	Yes	Yes
4	PCSH-20	900	25	5634	7.55	4845	19223	1.6	3.08	3PH	Yes	Optional	Yes	Yes	Yes	Yes	Yes
5	PCSH-23	1100	31	7630	10.23	6562	26034	2.17	4.03	3PH	Yes	Optional	Yes	Yes	Yes	Yes	Yes
6	PCSH-40	1900	54	12146	16.28	10446	41442	3.45	6.11	3PH	Yes	Optional	Yes	Yes	Yes	Yes	Yes
7	PCSH-53	2400	68	15776	21.15	13567	53828	4.48	7.9	3PH	Yes	Optional	Yes	Yes	Yes	Yes	Yes
8	PCSH-71	3200	91	20357	27.29	17507	69458	5.78	10.14	3PH	Yes	Optional	Yes	Yes	Yes	Yes	Yes
9	PCSH-85	4000	113	25420	34.08	21861	86733	7.22	12.51	3PH	Yes	Optional	Yes	Yes	Yes	Yes	Yes
10	PCSH-100	5200	147	29886	40.06	25702	101971	8.49	14.89	3PH	Yes	Optional	Yes	Yes	No	Yes	Yes
11	PCSH-145	7000	198	42391	56.82	36456	144638	12.04	21.91	3PH	Yes	Optional	Yes	Yes	No	Yes	Yes
12	PCSH-175	9000	255	51390	68.89	44195	175343	14.6	25.61	3PH	Yes	Optional	Yes	Yes	No	Yes	Yes
13	PCSH-210	11000	311	62586	83.9	53824	213543	17.78	32.86	3PH	Yes	Optional	Yes	Yes	No	Yes	Yes
FOR MEDIUM TEMPERATURE @ -2degC TO -8degC																	
14	PCSM-4	250	7	1250	1.68	1075	4265	0.36	1.31	1PH	Yes	No	No	Yes	Yes	No	No
15	PCSM-9	450	13	2751	3.69	2366	9386	0.78	2.4/1.8	1/3PH	Yes	Optional	Yes	Yes	Yes	No	Yes
16	PCSM-12	600	17	3813	5.11	3279	13010	1.08	2.8/2.51	1/3PH	Yes	Optional	Yes	Yes	Yes	Yes	Yes
17	PCSM-15	800	23	4620	6.19	3973	15763	1.31	3	3PH	Yes	Optional	Yes	Yes	Yes	Yes	Yes
18	PCSM-17	1000	28	4778	6.4	4109	16303	1.36	3.92	3PH	Yes	Optional	Yes	Yes	Yes	Yes	Yes
19	PCSM-28	1700	48	7875	10.56	6773	26870	2.24	4.88	3PH	Yes	Optional	Yes	Yes	Yes	Yes	Yes
20	PCSM-40	2200	62	11722	15.71	10081	39995	3.33	7.48	3PH	Yes	Optional	Yes	Yes	Yes	Yes	Yes
21	PCSM-53	2900	82	15739	21.1	13536	53701	4.47	9.79	3PH	Yes	Optional	Yes	Yes	Yes	Yes	Yes
22	PCSM-65	3750	106	20153	27.01	17332	68762	5.73	11.83	3PH	Yes	Optional	Yes	Yes	Yes	Yes	Yes
23	PCSM-80	4700	133	23950	32.1	20597	81717	6.8	14.24	3PH	Yes	Optional	Yes	Yes	No	Yes	Yes
24	PCSM-112	6400	181	33530	44.95	28836	114404	9.53	21.16	3PH	Yes	Optional	Yes	Yes	No	Yes	Yes
25	PCSM-135	8100	229	39750	53.28	34185	135627	11.29	24.55	3PH	Yes	Optional	Yes	Yes	No	Yes	Yes
26	PCSM-210	9000	255	46600	62.47	40076	158999	13.24	31.68	3PH	Yes	Optional	Yes	Yes	No	Yes	Yes

REFRIGERATION TECHNICAL DATA

Sr.No	Model	Cold Room Volume		Suggested Cooling capacity					Connected Load Kw	Power Supply	Condensor		Refrigerant		Compressor Type		
		CFT	CMT	Watts	HP	Cal	BTU	TR			Air Cooled	Water Cooled	R-404	R-22	Reci procating	Scroll	Semi Sealed
FOR LOW TEMPERATURE @ -18degC TO -28degC																	
27	PCSL-3	300	8	550	0.74	473	1877	0.16	2.5	1 PH	Yes	No	Yes	No	Yes	No	No
28	PCSL-4	350	10	1145	1.53	985	3907	0.33	1.98	3PH	Yes	No	Yes	No	Yes	Yes	No
29	PCSL-6	550	16	1788	2.4	1538	6101	0.51	3	3PH	Yes	Yes	Yes	No	Yes	Yes	Yes
30	PCSL-9	850	24	2743	3.68	2359	9359	0.78	4.1	3PH	Yes	Yes	Yes	No	Yes	Yes	Yes
31	PCSL-13	1200	34	3328	4.46	2862	11355	0.95	5.4	3PH	Yes	Yes	Yes	No	Yes	Yes	Yes
32	PCSL-18	1700	48	4743	6.36	4079	16183	1.35	6.9	3PH	Yes	Yes	Yes	No	Yes	Yes	Yes
33	PCSL-26	2500	71	7960	10.67	6846	27160	2.26	8.6	3PH	Yes	Yes	Yes	No	Yes	Yes	Yes
34	PCSL-38	3400	96	11355	15.22	9765	38743	3.23	10.6	3PH	Yes	Yes	Yes	No	No	Yes	Yes
35	PCSL-42	3800	107	10870	14.57	9348	37088	3.09	11.5	3PH	Yes	Yes	Yes	No	No	Yes	Yes
36	PCSL-45	4000	113	12745	17.08	10961	43486	3.62	13.5	3PH	Yes	Yes	Yes	No	No	No	Yes
37	PCSL-50	5000	141	15390	20.63	13235	52511	4.37	15.18	3PH	Yes	Yes	Yes	No	No	No	Yes
38	PCSL-65	6500	184	18690	25.05	16073	63770	5.31	20.29	3PH	Yes	Yes	Yes	No	No	No	Yes
39	PCSL-80	8000	226	21875	29.32	18813	74638	6.21	23.65	3PH	Yes	Yes	Yes	No	No	No	Yes
40	PCSL-105	10500	297	27810	37.28	23917	94888	7.9	32.4	3PH	Yes	Yes	Yes	No	No	No	Yes
FOR HIGH TEMPERATURE @ 2degC TO 18degC WITH HUMIDITY FOR RIPENING / PRE - COOLING																	
41	PCSHH-12	1200	34	5107	6.85	4392	17425	1.45	2.03	1/3PH	Yes	No	Yes	Yes	Yes	Yes	Yes
42	PCSHH-17	1500	42	5033	6.75	4328	17173	1.43	2.53	3PH	Yes	Yes	Yes	Yes	Yes	Yes	Yes
43	PCSHH-20	1700	48	8125	10.89	6988	27723	2.31	3.27	3PH	Yes	Yes	Yes	Yes	Yes	Yes	Yes
44	PCSHH-23	2200	62	10930	14.65	9400	37293	3.11	4.02	3PH	Yes	Yes	Yes	Yes	Yes	Yes	Yes
45	PCSHH-40	3500	99	17648	23.66	15177	60215	5.01	6.15	3PH	Yes	Yes	Yes	Yes	Yes	Yes	Yes
46	PCSHH-53	4500	127	22869	30.66	19667	780299	6.5	8.13	3PH	Yes	Yes	Yes	Yes	Yes	Yes	Yes
47	PCSHH-71	7000	198	29769	39.9	25601	101572	8.46	10.45	3PH	Yes	Yes	Yes	Yes	Yes	Yes	Yes
48	PCSHH-85	8000	226	38056	51.01	32728	129847	10.81	12.97	3PH	Yes	Yes	Yes	Yes	Yes	Yes	Yes
FOR ULTRA LOW TEMPERATURE -30degC TO -40degC																	
49	PCSUL-17			5100	6.84	4386	17401	1.45	5.82	3PH	Yes	Yes	Yes	No			Yes
50	PCSUL-24	per the load		7673	10.29	6599	26180	2.18	7.63	3PH	Yes	Yes	Yes	No	semi sealed two stage		Yes
51	PCSUL-39			12025	16.12	10342	41029	3.42	12.26	3PH	Yes	Yes	Yes	No			Yes
52	PCSUL-55			16185	21.7	13919	55223	4.6	15.57	3PH	Yes	Yes	Yes	No			Yes
53	PCSUL-64			19215	25.76	16525	65562	5.46	18.43	3PH	Yes	Yes	Yes	No			Yes
54	PCSUL-72			22315	29.91	19191	76139	6.34	21.05	3PH	Yes	Yes	Yes	No			Yes
55	PCSUL-86			27135	36.37	23336	92585	7.71	25.5	3PH	Yes	Yes	Yes	No			Yes





Perfect cooling system



Perfect cooling system
Kailash Patil
Mob.no 9637996333



Perfect Cooling System - 9637996333



Perfect Cooling System - 9637996333



Perfect Cooling System
kppcs2017@gmail.com
Kailash Patil 9637996333



Coco-cola kusus wada Site



Chakan site



Cold Room puf panel
installation
Perfect Cooling System



Add.: Perfect Cooling System, Gala No. 12, Shiv Shakti Laghu Udyog Compound, Opp. Woodfiled Company, Asangaon, Tal. Shahapur - 421601

E: kppcs2017@gmail.com | sales@perfectcooling.in

M: 9637 996333 | **W:** perfectcooling.in

